

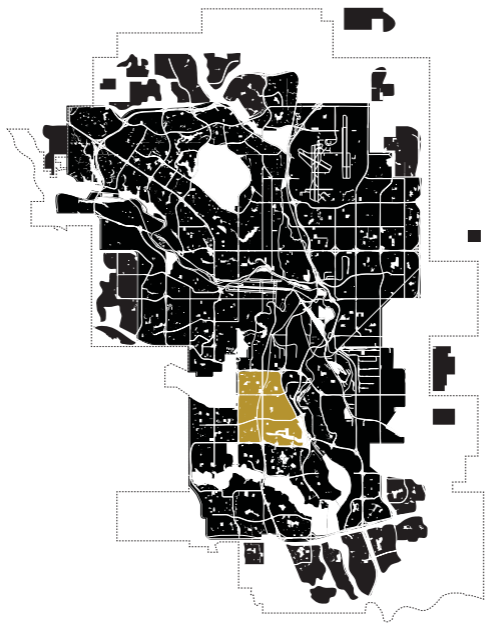


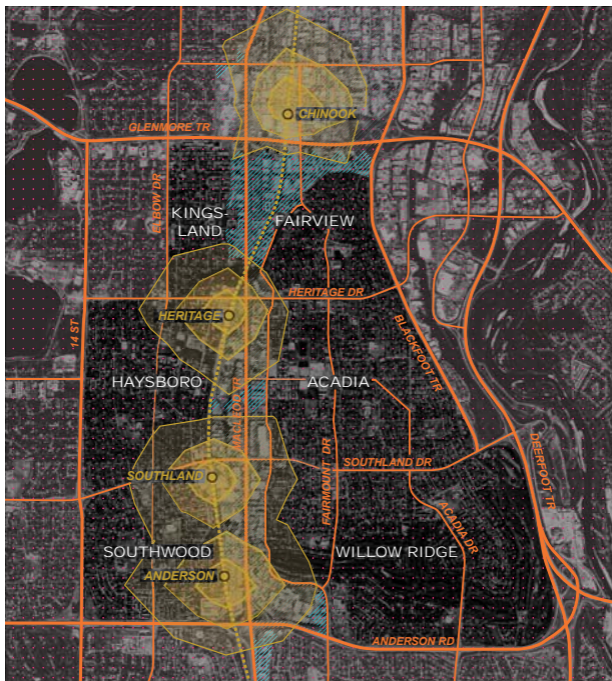
***Designing for
Active Neighbourhoods:
Anderson to Heritage
2018***

GUIDEBOOK

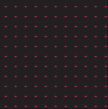
Table of Contents

Introduction.....	04
Walking Route.....	07
Narratives.....	09
Citizen Ideas.....	16
Socio-Economic Indicators.....	18
Notes.....	26





Walking Time From
LRT Stations (Minutes)



100 Meter Grid



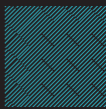
LRT Red Line



Arterial Road



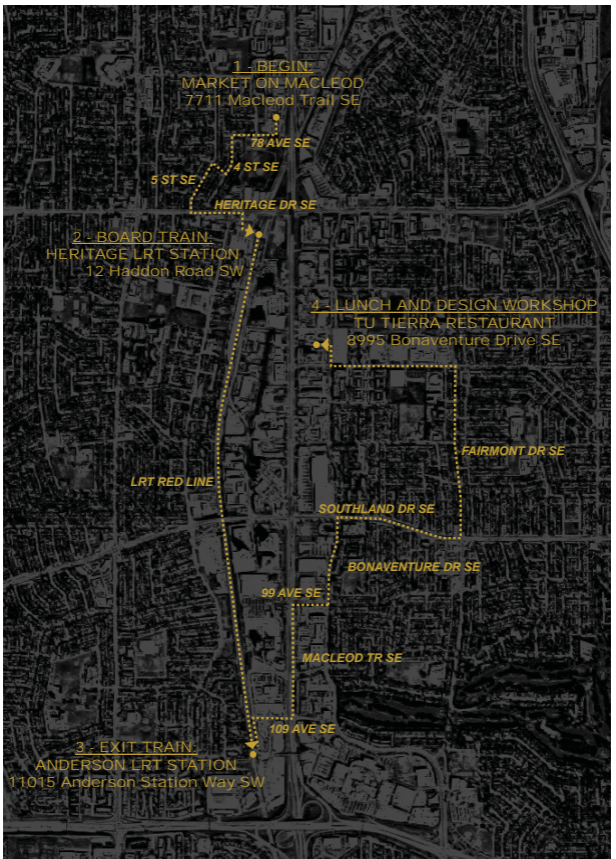
Main Boulevard



Commercial /
Industrial Corridor

Anderson to Heritage Region

The Anderson to Heritage Region includes six communities, all of which border Macleod Trail South, the LRT Red Line, and the adjacent commercial and industrial corridor. All share the *Island Effect* - they are segregated from one another, and to the city at large, by arterial roads. These neighbourhoods were built between 1957 and 1976, and comprise a portion of the third ring of residential development in Calgary.





IABR 2012 - MAKING CITY - ZUS

Narratives

Rather than abstracting complex, multilayered stories and information into abstract statistics, graphs, and maps, narratives have the opportunity to create knowledge about the site to give a sense of the unique character as well as reveal problems that require new ideas.

Connectivity

Continuous infrastructures that connect the parts into a whole

Activity

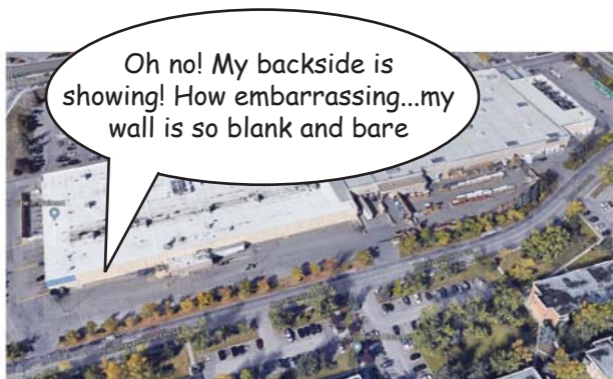
Active public spaces that are gathering points for the community

Productivity

Production, circular economies and new modes of learning and working



Train Station



Big Box Store / Strip Mall On Macleod

Kids don't really use me anymore... I wonder what else I could be?




Community Ball Diamond

I'm at the border between work and live. I suffer from a lack of identity




Bonaventure Drive



Looking to hook up with other green systems!

Ecological Infrastructure



Could I be a parking lot & something else? Could I switch my use based on season or time?

Huge Parking Lot



Freestanding Commercial Building



Macleod Trail



I love giving pedestrians a place to cross, but I wouldn't be necessary if the street were nicer!

Multi-level Circulation



I'm green! Could other roofs be like me, or have other uses and programs?

Utilized Roof



I help pedestrians take the long route - to get more exercise!

Barriers in Parking Lots



My "Cowboy Mentality" helps me to make use of the whole plot!

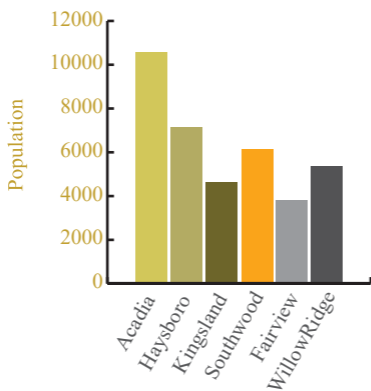
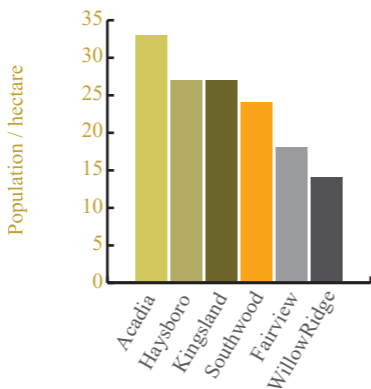
Cowboys

Citizen Ideas

1. More multi-use parks in every community
2. Improve connections between arenas and Heritage LRT
3. Improve way-finding for cycle routes
4. Community-oriented coffee shops in communities
5. Improve pedestrians comfort and safety including road painting and wider sidewalks
6. Shortcuts to bigger stores from communities
7. Walkable paths to schools and shops
8. Lots of green space in all communities
9. Better access to LRT stations
10. Gardens in communities including rain gardens
11. Community welcome signs / community bulletin boards
12. Recreation Hubs
13. Improve pedestrian safety at Southland Crossing
14. Improve pedestrian way-finding through pathways
15. Make LRT stations more pleasant places to be (some ideas include community hubs, small scale retail and food trucks)
16. Many big box store backs are ugly
17. Improve lighting in public spaces and LRT stations
18. Connect Elbow and Bow river pathway systems

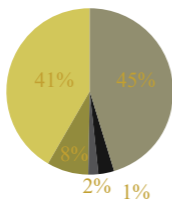


Population Density / Population

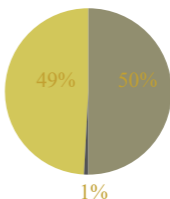


Dwelling Unit Typology

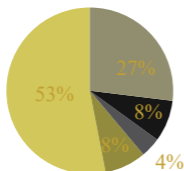
Acadia



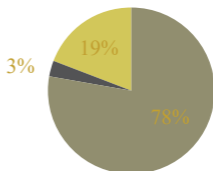
Haysboro



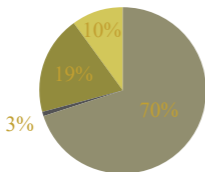
Kingsland



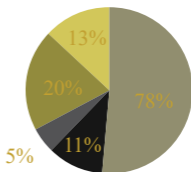
Fairview



Willow Ridge

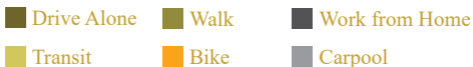
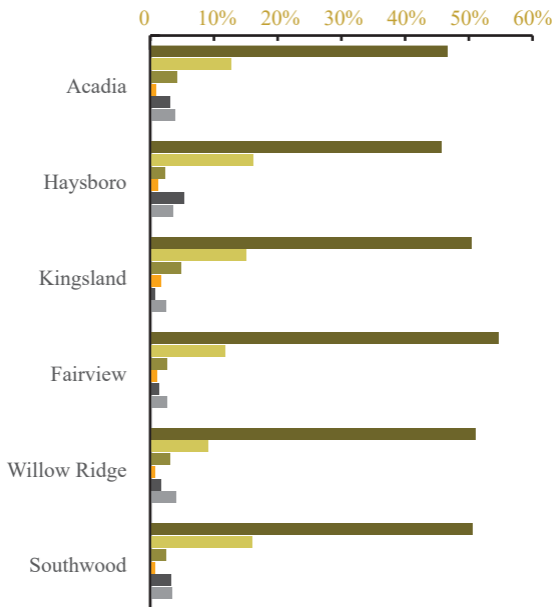


Southwood

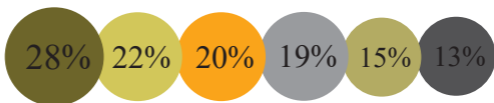


■ Single Family ■ Apartment ■ Townhouse ■ Duplex ■ Converted

Transport Mode to Work

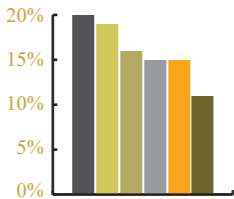


% Visible Minority



Calgary: 30%

% Population Over Age 64



Calgary: 10%

Median Income



Notes / Sketches



Notes / Sketches



Notes / Sketches



Notes / Sketches

Notes / Sketches



Notes / Sketches



SPECTACLE
Bureau for Architecture and Urbanism